

24-25 Carpool Updates

To ensure efficient coordination and safety for students, we have highlighted important guidelines and adjustments for this year.

★ Arrival

- Arrival Window: Students should arrive between 7:45 AM and 8:00 AM. At 8:00, the back gate will be closed and students will need to enter through the front office.
- Tardy Policy: Students arriving after 8:05 AM are considered tardy and must be signed in by an adult in the front office.

★ Traffic Flow & Safety:

- Entrance & Exit: There is one way in and one way out.
- Carpool Lane: Divides into two "Kiss and Go" lanes. Please move all the way up behind the car in front of you.
- Student Drop-Off: Designated area on Dunkirk.
- Dunkirk East lane: For family parking; must exit through the roundabout.
- Dunkirk West lane: For student drop-off.
- Parking Option: Families can park at the field parking lot and walk kids to the playground. The staff parking lot is closed off to families.
- Crosswalk Safety: Staff will ensure safety at crosswalks.
- Pre-K Specific: Pre-K students must be walked to the classroom door or dropped off through "Kiss and Go."

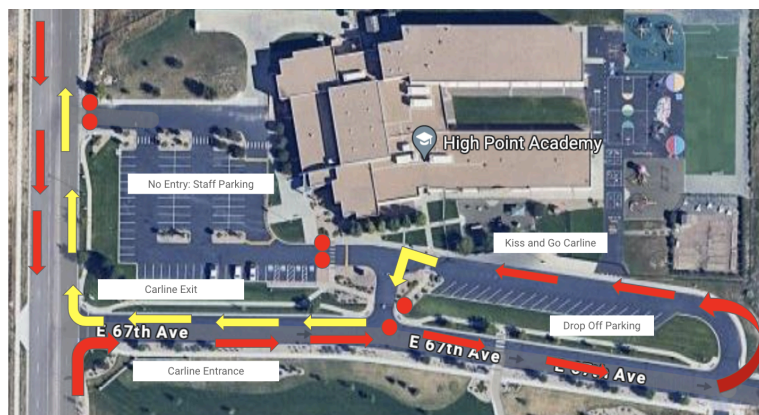
★ Dismissal:

- Pre-K Dismissal: 2:50 PM
- K-8 Dismissal: 3:00 PM

Dismissal Process:

- PikMyKid App: Please be sure to download the app. Each student will be assigned a unique three-digit code.
- Designated Pick-Up Options:
 - Carline
 - Parent Pick Up
 - Independent Walkers

Thank you for your cooperation in ensuring a smooth and safe carpool process for everyone!





Parent App Guide

1 Download The App

The Pikmykid app is available for download on your smartphone's app store (Google-Play, Apple Store). Each user will need to download and register on their own smartphone.

App Store Download Links



iOS



Android

2 Register

Select "Create Account" or use your Google/Apple account. Follow the prompts to sign up. You will verify your email address and phone number to complete registration.

What's your cell phone number?

Please enter your cell phone number here. We'll send confirmation code to verify it.

USA

+1 (028) 123-1234

Need help?

Next

Cancel

Or Continue With

Google Apple

Email

Need help?

What's your name?

Please enter full name here which is registered with the school as Parent or Delegate.

First Name

Last Name

Need help?

Next

Set a strong password

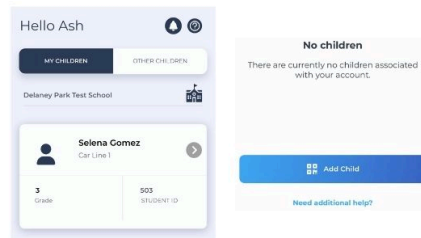
A strong password will have an uppercase, lowercase, character, a number, and special symbol

Enter Password

Confirm password

3 How To Add A Child

Schools might connect your children automatically! If you see the "No Children" on screen & the school gave one time Parent Connection QR code, then select "Add Child" to scan the code and add one child at a time, else tap on "Need Additional Help?" to reach our support desk.



Secure Way To Connect

Parents can use our website also – parentapp.pikmykid.com to register and make pick-up changes, report student absences or checkins.

Note: Announcement is only available through the parent phone app.

Need Help?

Email support@pikmykid.com.

Be sure to include the name of the school, the child's name, the dismissal ID, and your mobile phone number, with your questions.